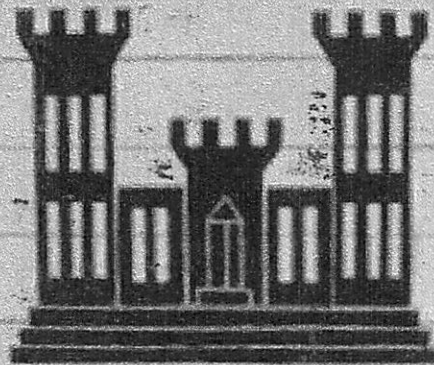
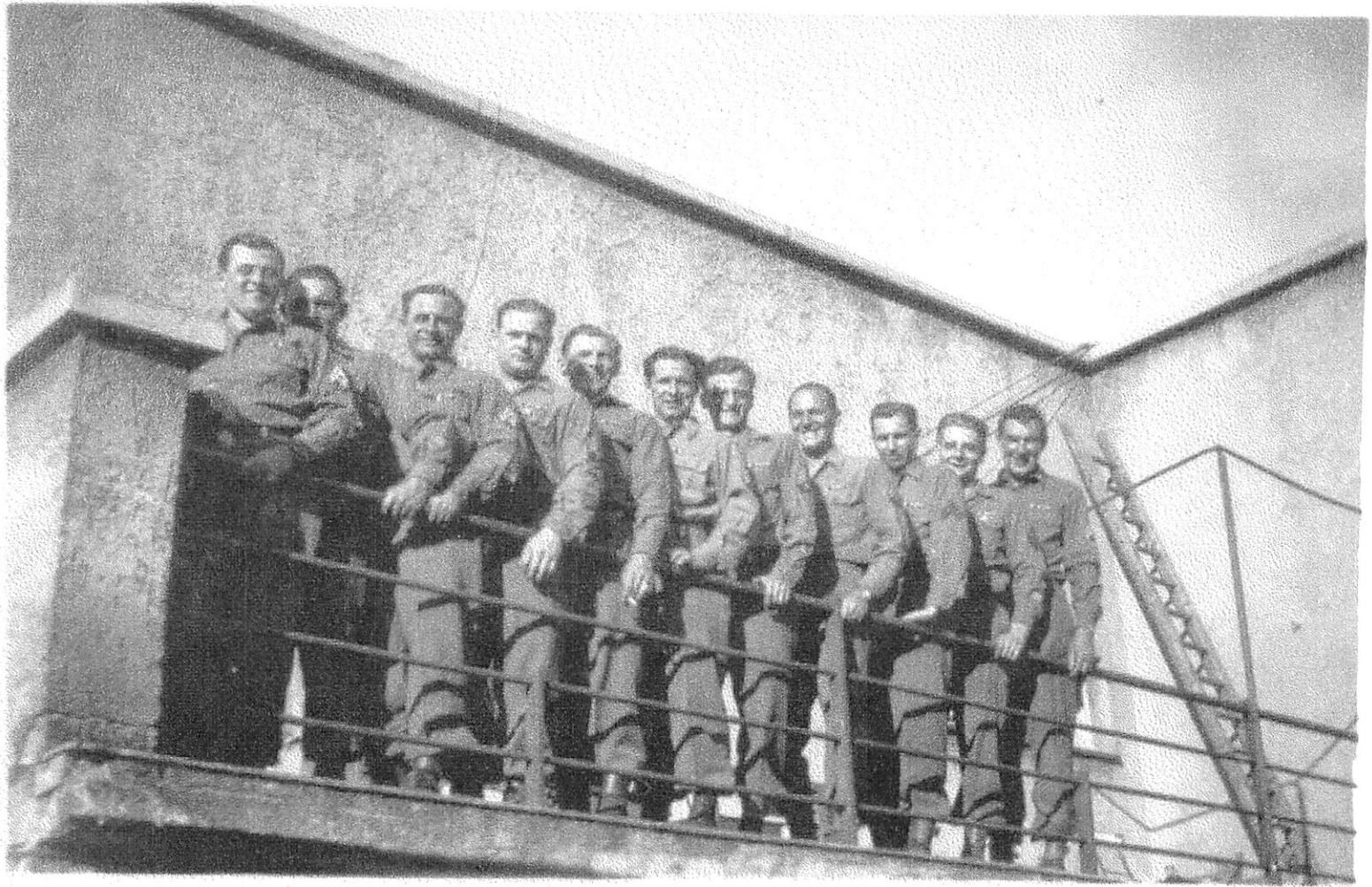


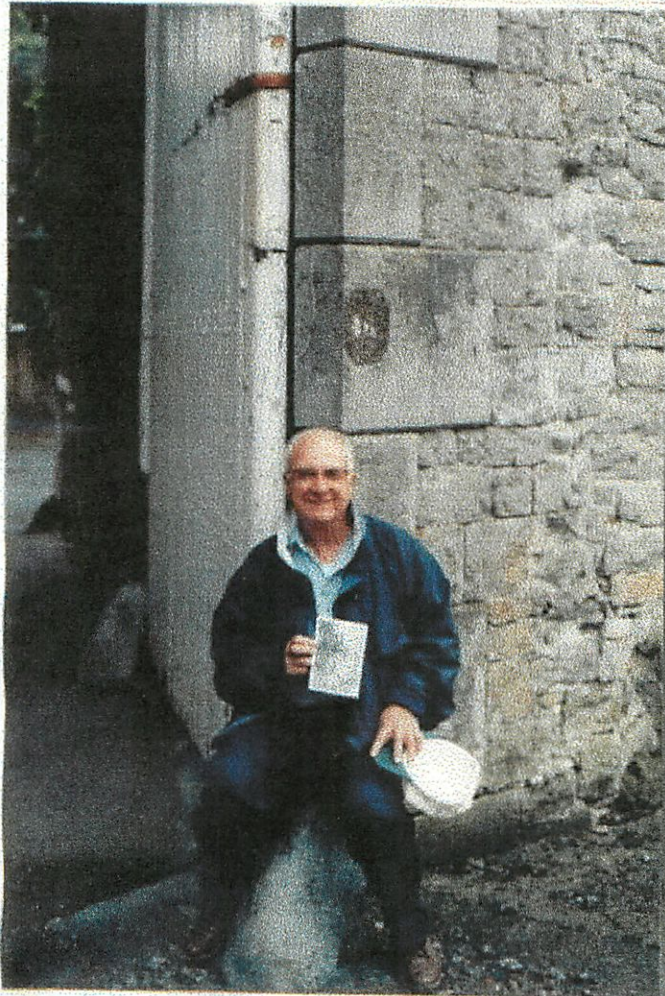
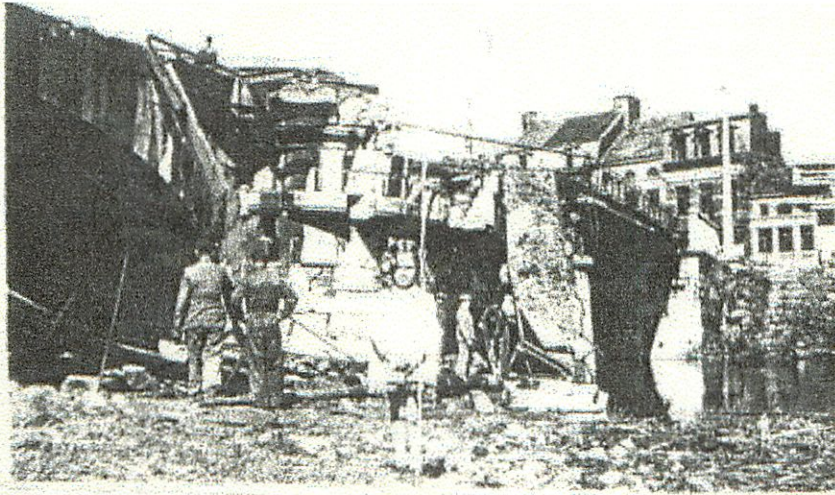
631



ENGR. LT. EQUIP. CO.

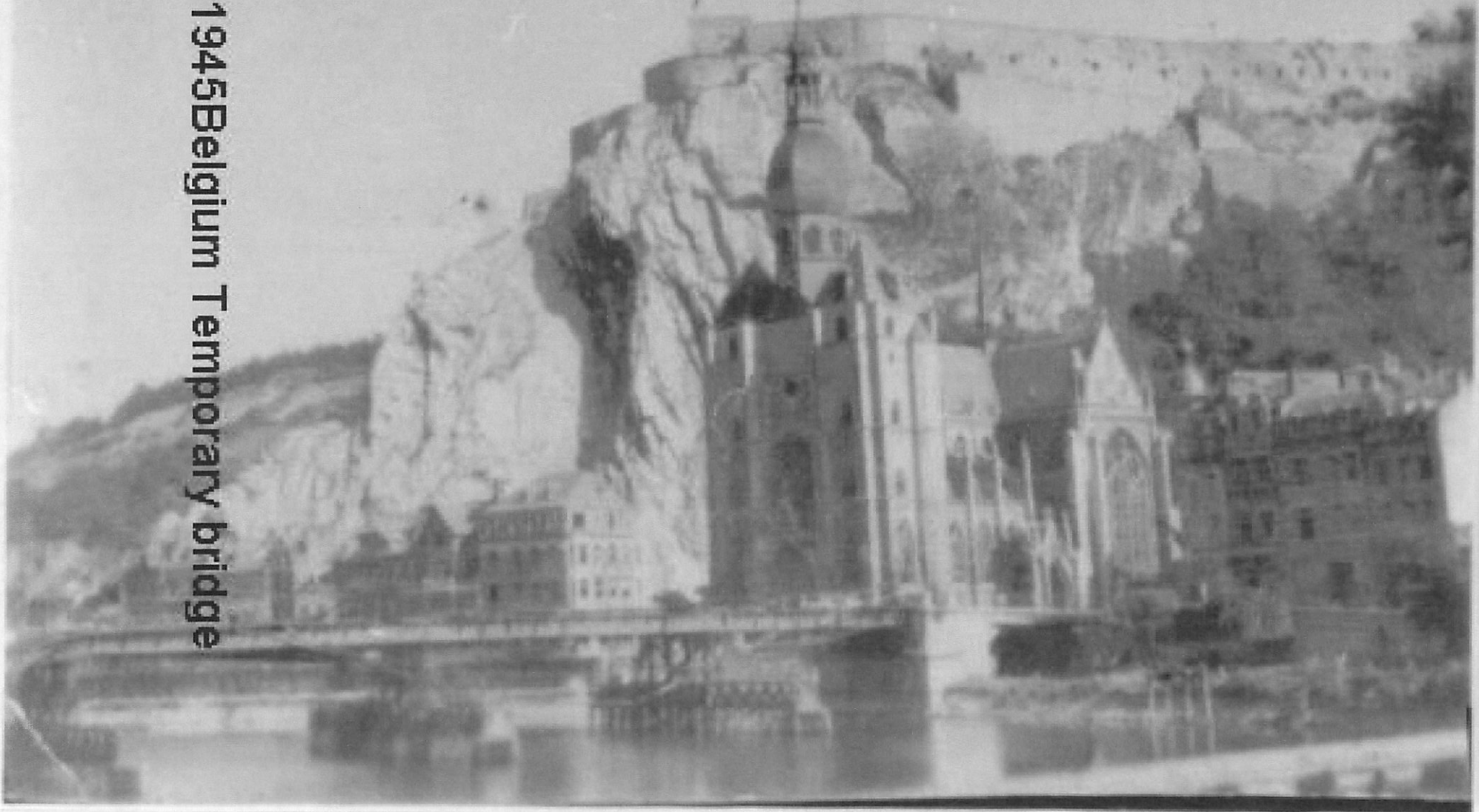




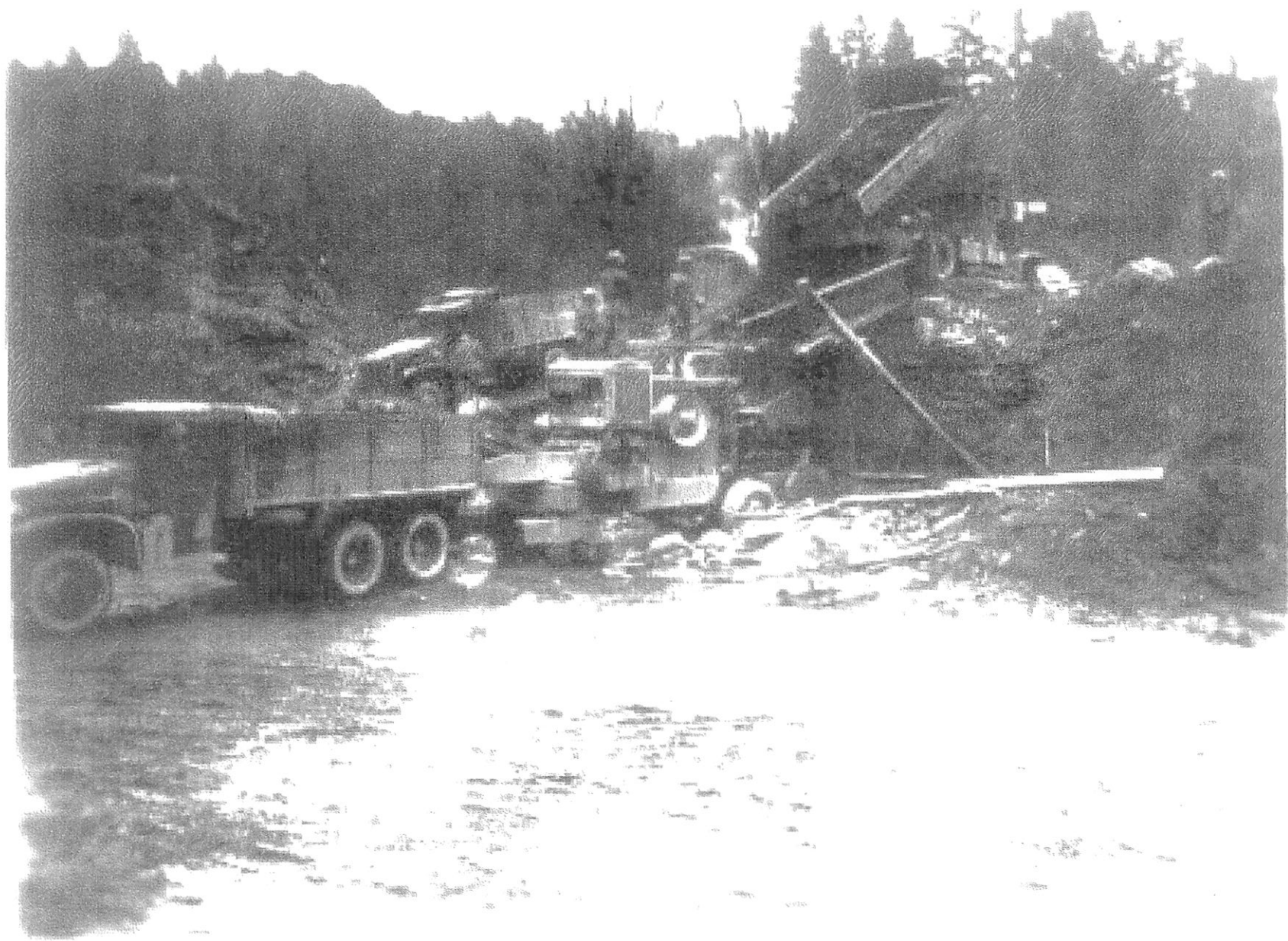


CLITEAU SALLY
BELGIUM
1945 + 1997

Dinant 1945 Belgium Temporary bridge

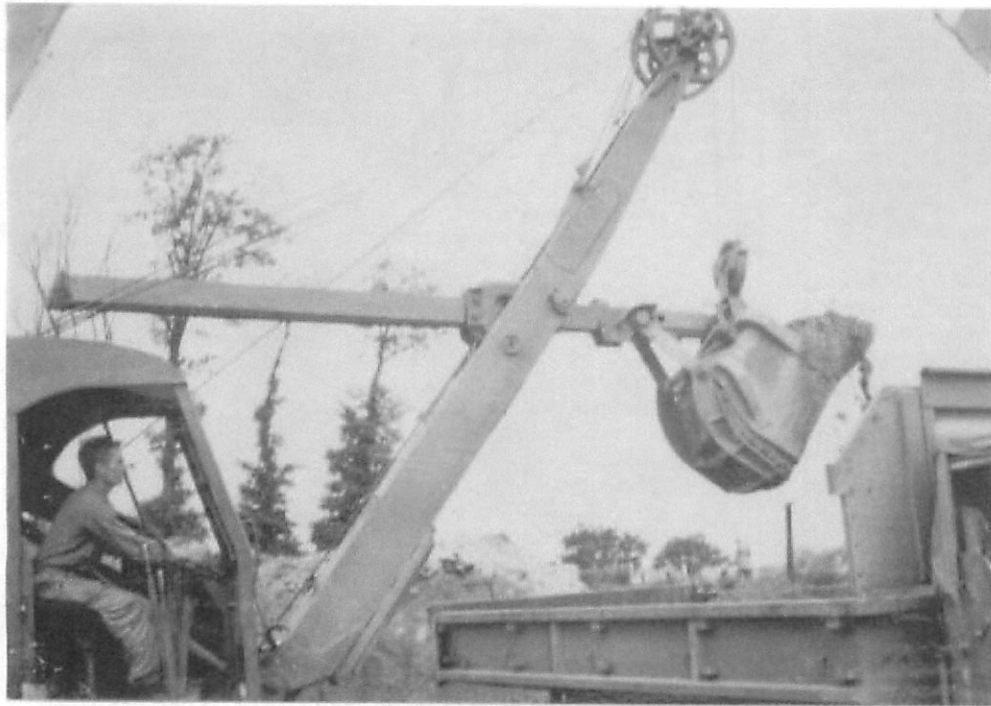


TEMP BRIDGE WE HELPED TO BUILD 1945





CONVOY FRANCE '44 JULY



PREMIY PLANT FRANCE '44



11

11



Person 11

11

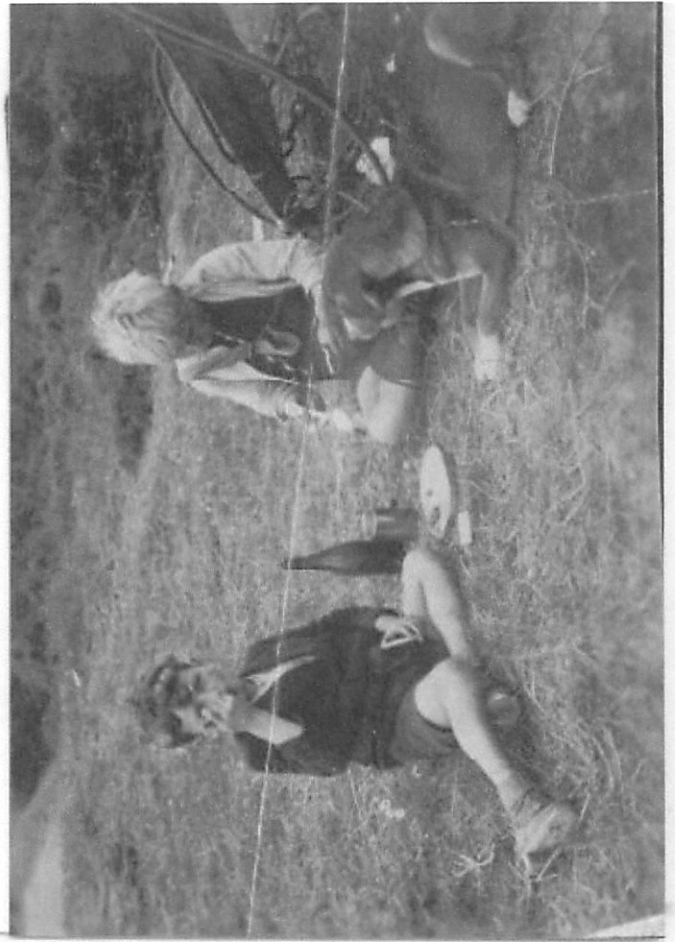
11

MARION NORRIS 1944

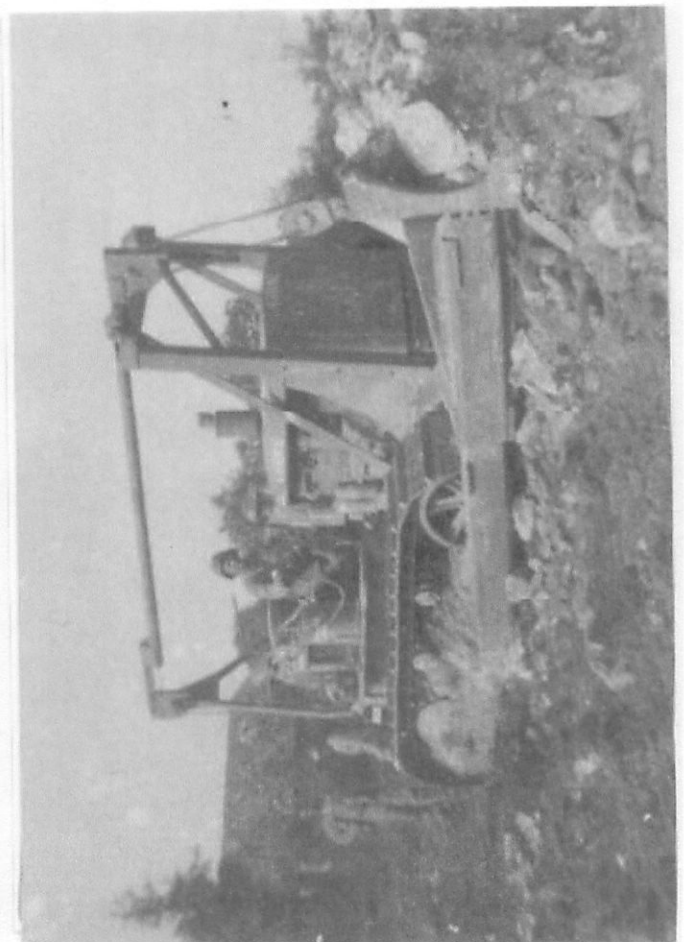
normandy 1944 maintenance platoon (506x360x256 jpeg)





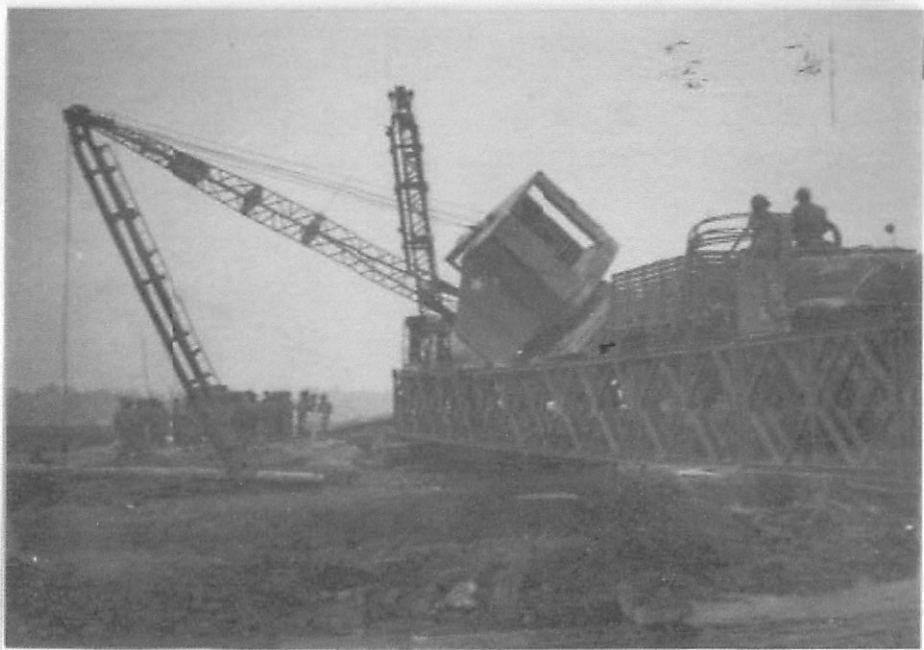


NORMANDY 1944



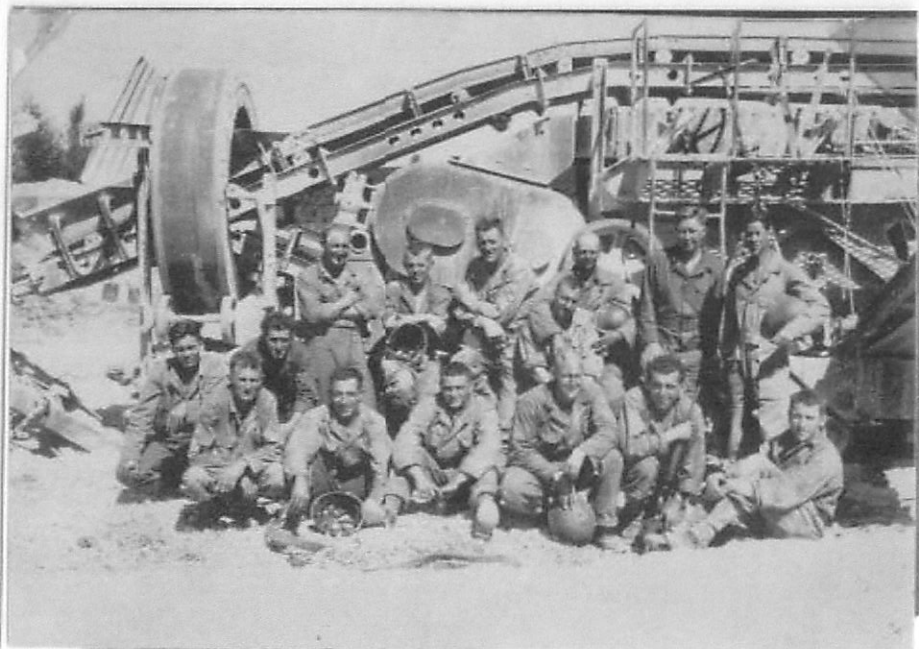


COOKS NORMANDY 1944
VIGANT & ?

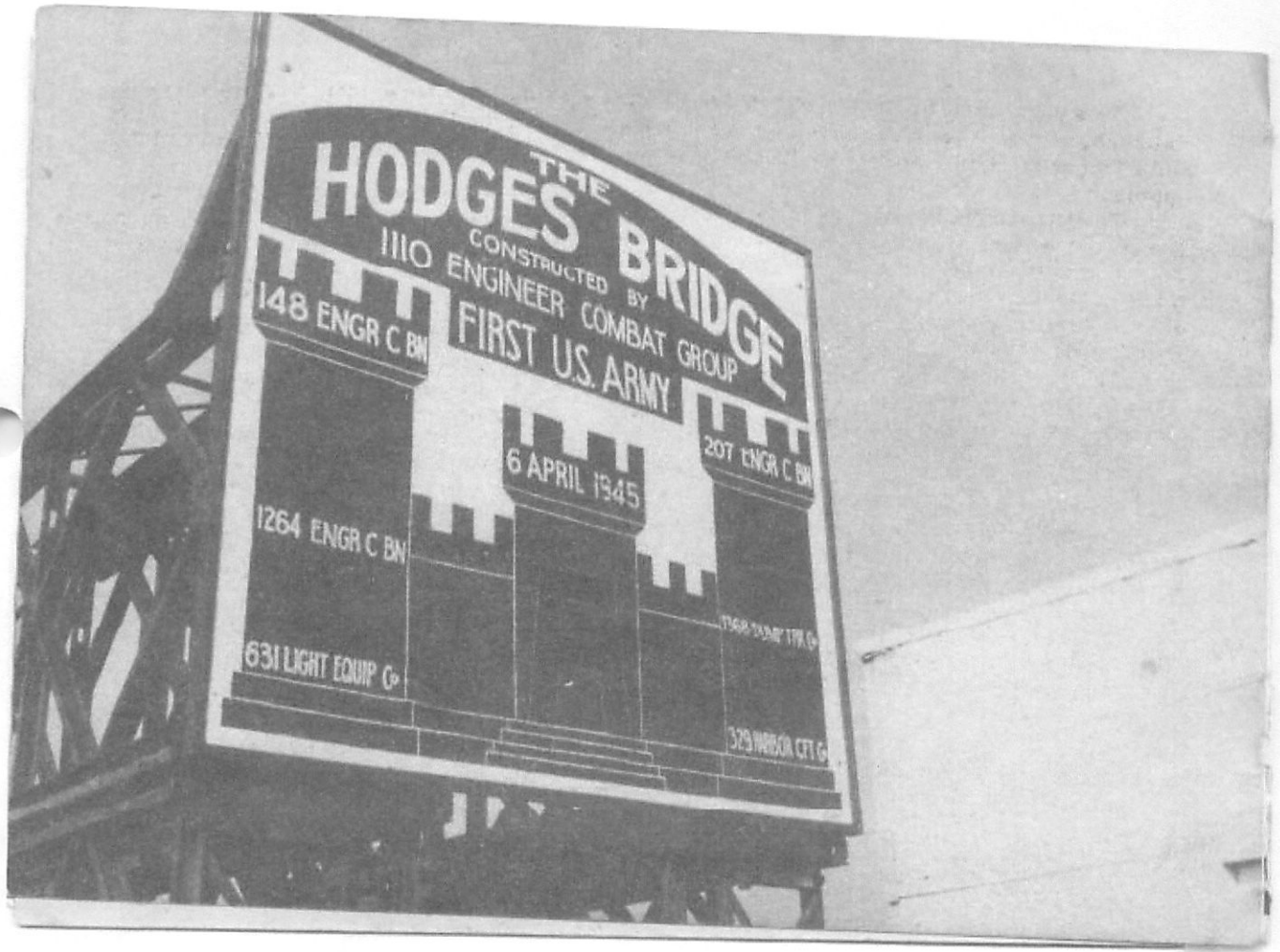


SLIGHT PROBLEM CRANE LEANED
OVER TOO FAR.

PREMIER PLANT FRANCE 1944



631ST ENGR L-ECO. ROCK CRUSHER FRANCE 1944





sgt keeley (303x380x256 jpeg)



SGT. KEELEY





ENGLAND - GROUP WAITING TO GO TO NORMANDY JUNE 1944



MERITORIOUS SERVICE AWARD DAY
1945



JOE ADIZZI
BOYCE FIDUCIA
GERMANY 1945
EISENACH.



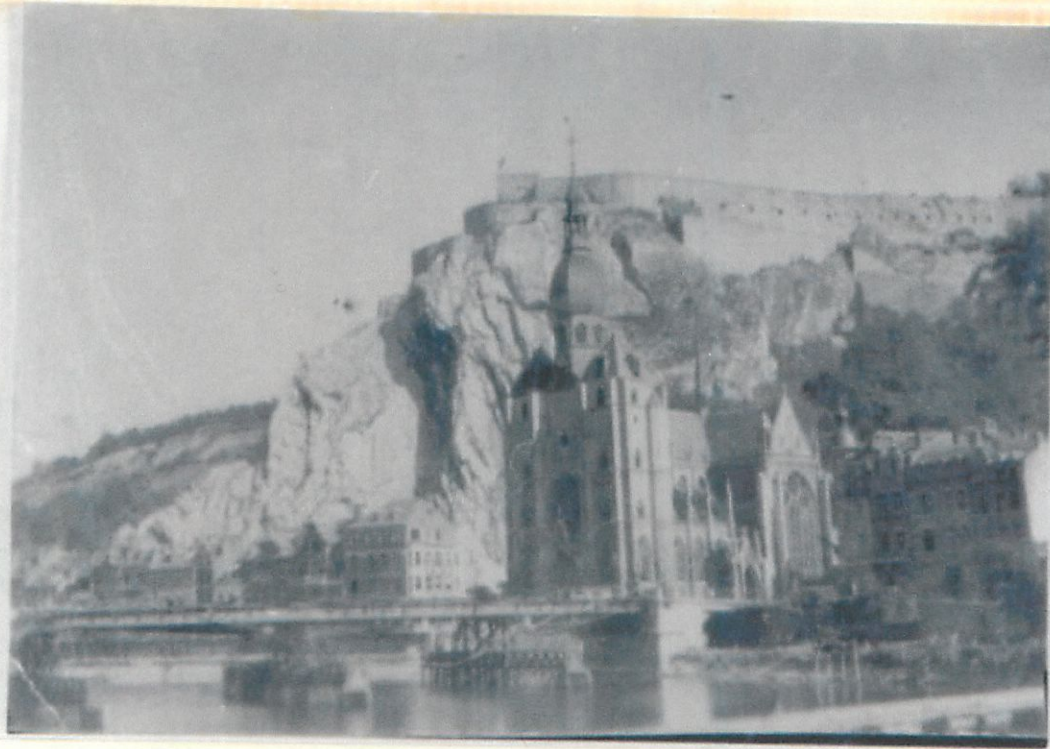
GENE, DAVID, MARY



PL0602 1944 DECEMBER

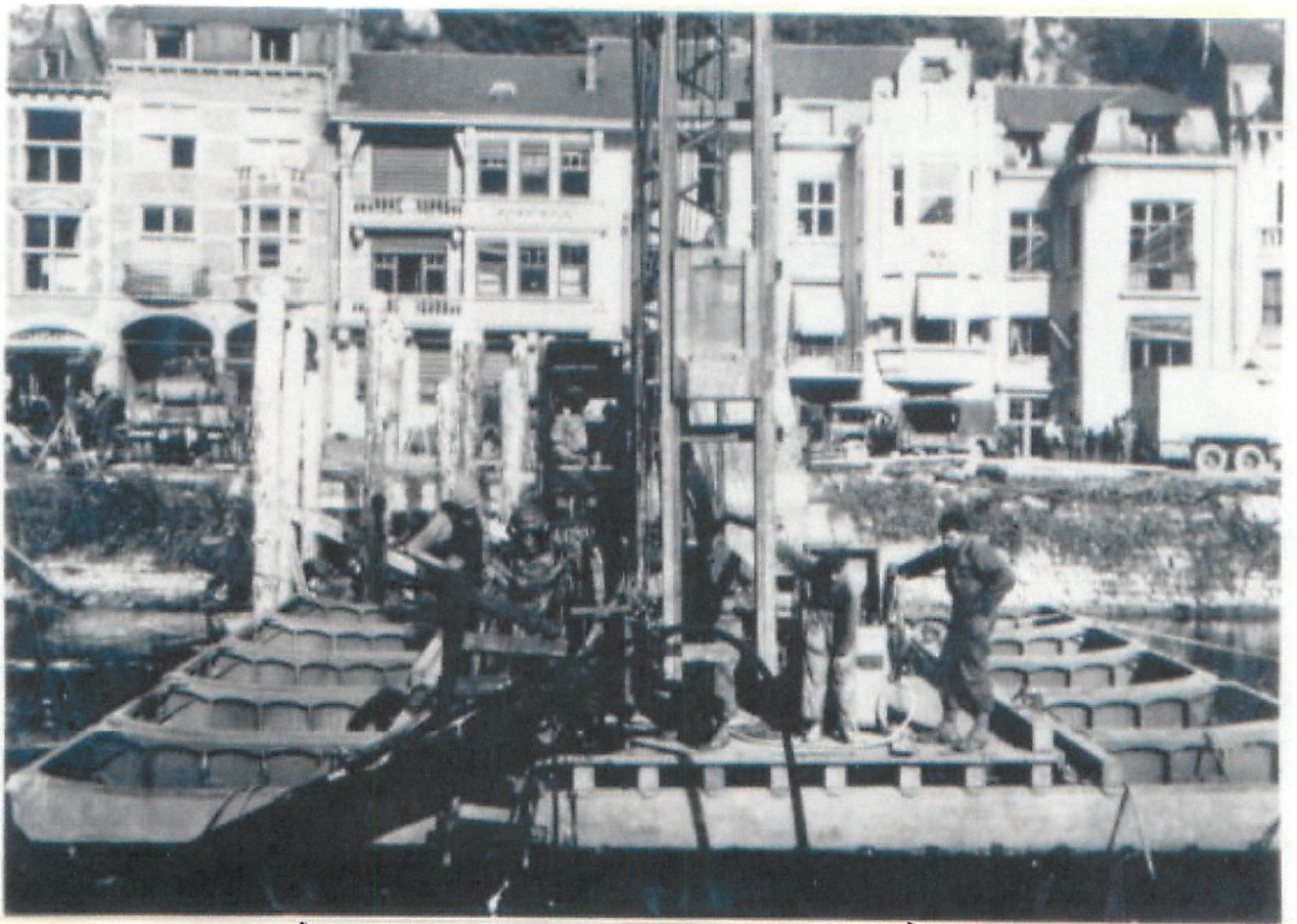
Chateau
Seny
Belgium
Dec
1944-Aug
1997





Dinant Belgium Dec. 1945 Bridge 631 St. Built
Dinant August 1997 New Degualle Bridge





DILE DRIVER LOST "CAP" & HAD TO
USE DIVER TO RETRIEVE IT.

DINANT BELGIUM 1944



DINANT BELGIUM 1947



GIOE FIDUCIA + CAPIZZI MARSIELLES ZOO 1945-JULY



Dinant 1997 New Bridge

NEW BRIDGE AT DINANT 1997



Subject: Fwd: 631St. Engr. Lt Eq. Co

Date: Mon, 16 Jul 2001 09:08:56 EDT

Frank the name of the contact of the 627Th. Is Terry Pike. I am forwarding his e-mail.

Attached Message

From: TomTP@webtv.net (Terry Pike) [[Save Address](#)]
To: GFiducia@aol.com
Subject: Re: 631St. Engr. Lt Eq. Co
Date: Fri, 13 Jul 2001 11:41:07 -0500 (CDT)

Thanks for yor contact--We were the 627th Eng. Lt. Eq. Co. also 1st Army troops. We were selected to form this unit at Ft. Mcpherson, Ga. in early 1943. We were all Ala. & Ga. boys --95% 18 yr. olds. We were shipped to Ft Lewis, Wa. for 12 wks. basic. After about 8 wks. we convoyed with all equipment to Oregon desert manuevers. During that peroid my best buddy & I were sent to Ft. Belvoir, Va. Eng. Sch. for 6 weeks spec. trg. He was a shovel & quick-way crane opr. & I was a D-7 angle blade opr. While there our unit ret. to Ft. Lewis and later to the Mohave Desert in So. Ca. for more man. We joined them after Eng. Sch. After man. we were sent to Camp Indio, Ca. to repair and clean equip. Got passes to La & Hollywood while there. Next move was to Camp Bowie, Tx where we prepared and loaded equip. onto rail cars and we were shipped to West Virginia for mountain manuevers. On 23 June we were hit by cyclone about 11:30 PM on Sat. night. Much of the co. wre on weekend pass. I was not. We lost ALL our tents, rifles, duffle bags . Everything but our heavy equipment. We aided in clean-up in the towns in the area and a few days later were shippep to Camp Pickett, Va. as our priority had heated up. We were processed for overseas and were shipped to Camp Miles Standish, Ma. and from there to Boston POE for shipment overseas. We were on the USS Wakefield and bound for England . We landed at Liverpool --debarked onto a train for Southhampton---debarked onto an English ship--SS Antenor. and to Omaha Beach. We had to debark down landing nets with full field packs and weapons. Due to rough seas we had several injuries --none severe. Our heavy equip. was delayed for several days and our TAT for more than a week. Finally joined 1st Army at Leige, Bel. and immediatly started sending out equip. We

we were assigned to the following Combat Bat. state side and ETO:
1104-1105-1136-1152-1134-1135-1125 We were in the Battle of the Bulge----Roer River Crossing---Colgne Plains and supplied some equip & men to Remagen Bridge. We returned to the states on the troop ship Duncan--a Liberty ship. Caught in an Atanlic Storm for 3 days--made no headway & 50 mi. off course when subsided We were on re-deployment to the Pacific as you were but the BIG bomb was dropped before we reached port .. Quite a celebration on board. After furlougs we reported to Camp Polk ,La. where our unit was deactivated & we were discharged.
-----I am sure many of our experiences were simular..

P.S. I found out after returning home that a cousin of mine flew the PHOTO B-29 on the BOMB drop. I am sure many of the pictures we see were made from his plane.

TERRY PIKE (34806826)



CAMP BRECKIN RIDGE KY 1943



EXERCISE FIELD



THE END OF A DAY. TIRED OUT.



CAMP BRECKENRIDGE JULY 1943



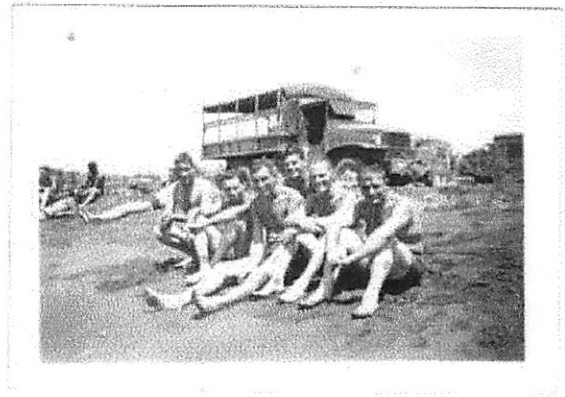
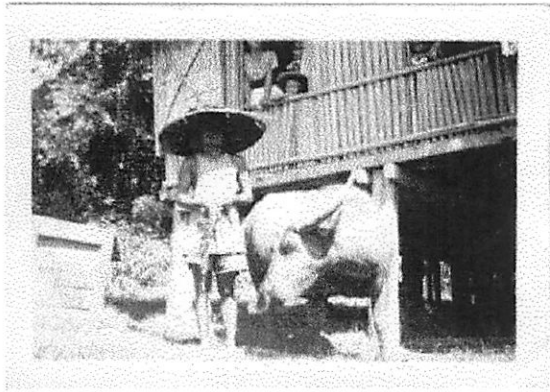
England 1944

Car
Breckenridge
e Kv. 1943

GERO SYMONDS MORZAK, DONISE



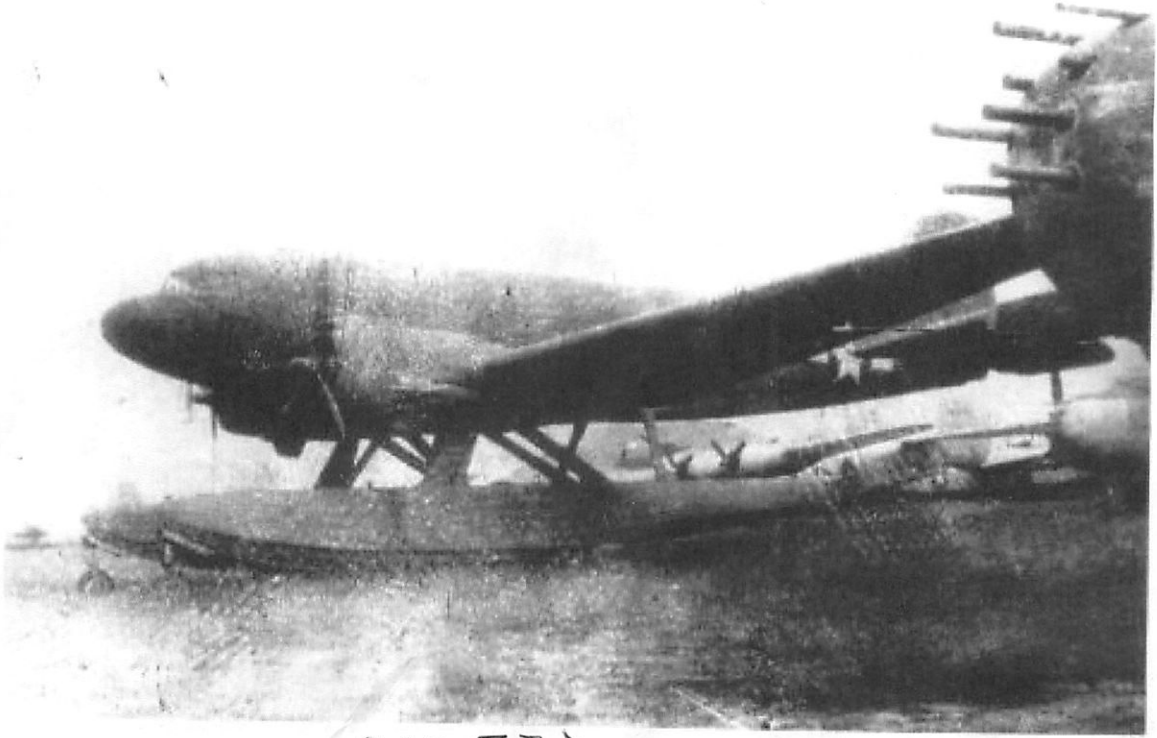
This aerial post card view was utilized by Matson to depict the ship both as MATSONIA and LURLINE. When she changed names, MATSONIA was airbrushed out of the image. The other LURLINE could be



Natives & Swimmers



luzon 1945 c47 on pontoons (480x306x256 jpeg)



CLARK FIELD
C47 ON PONTOONS



LUZON 1945

luzon island c47 on pontoons 1945. (496x356x256 jpeg)



C47 ON PONTOONS
CLARK FIELD 1945



LUZON GUS FORTUNE + JOE DALY



